



HID ignitors for series systems

SN D 57 220-240V 50/60Hz

HID ignitors for series systems

Product data

• General Information

Application Code	57
Lamp Type	SON
Number Of Lamps	1 piece/unit

• Operating and Electrical

Input Voltage	220 to 240 V
Input Frequency	50/60 Hz
Ignitor Type	Semi-Parallel
Ignition Attempts	3
Ignition Time (Max)	1185 s
Ignition Voltage (Max)	2.5 kV
Ignition Voltage (Min)	1.8 kV
Response Voltage	195 V
Mains Voltage	-8%/+6%
Performance (AC)	
Mains Voltage Safety (AC)	-10%/+10%
Power Losses (Nom)	1.0 W

• Wiring

Ballast Contact Wire	0.70-2.50 mm ²
Cross Section	
Connector Type	Screw

• System characteristics

Rated Ballast-Lamp Power	50/70 W
--------------------------	---------

• Temperature

T-Ambient (Max)	85 °C
T-Ambient (Min)	-20 °C
T-Case Maximum (Max)	90 °C

• Mechanical and Housing

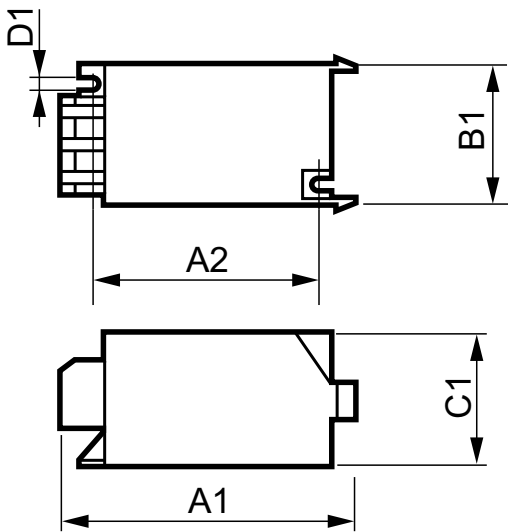
Housing	SNI-85
---------	--------

• Product Data

Full product code	871150093066830
Order product name	SN D 57 220-240V 50/60Hz
EAN/UPC - Product	8711500930668
Order code	913700184966
Numerator - Quantity Per Pack	1
Numerator - Packs per outer box	48
Material Nr. (12NC)	913700184966
Net Weight (Piece)	0.050 kg

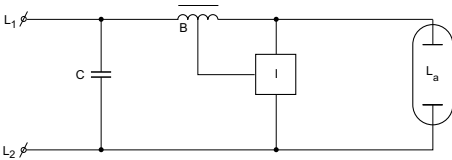
PHILIPS

Dimensional drawing



SND 57 220-240V 50/60Hz

Product	D1	C1	A1	A2	B1
SND 57 220-240V 50/60Hz	4.3 mm	38.5 mm	84.5 mm	65.0 mm	41.5 mm



© 2015 Koninklijke Philips N.V. (Royal Philips)
All rights reserved.

Specifications are subject to change without notice. Trademarks are the property of Koninklijke Philips N.V. (Royal Philips) or their respective owners.

www.philips.com/lighting

2015, December 23
data subject to change