



# HID ignitors for series systems

SN 57 220-240V 50/60Hz

HID ignitors for series systems

## Product data

### • General Characteristics

Application code	57
Rated Lamptype	SON
Rated Number of Lamps	1 piece
Rated Ballast-Lamp Power	50/70
Line Voltage	220-240 V
Line Frequency	50/60 Hz
Housing	SNI-85

### • Operating Characteristics

Ignition type	Semi-Parallel
Number of ignition pulses	2 x
Ignition Voltage	2.50 (max) kV
Response voltage	195 V
Mains voltage safety (AC)	-10%/+10%
Mains voltage performance (AC)	-8%/+6%
Power losses gear	0.5 W

### • Wiring Characteristics

Cable-Cap wires device/lamp	2 nF
Connector type	Screw
Striplength	6.0 mm
Wcs Ballast contacts	0.70-2.50 mm2

### • Temperature Characteristics

T-case maximum	90 (max) C
----------------	------------

T-ambient	-20 (min), 75 (max) C
T-storage	-25 (min), 80 (max) C

### • Product Dimensions

Length A1	84.5 mm
Fixing Hole Distance	65.0 mm
Length A2	
Width B1	41.0 mm
Height C1	38.0 mm
Fixing Hole Diameter D1	4.3 mm

### • Approval & Application Chars

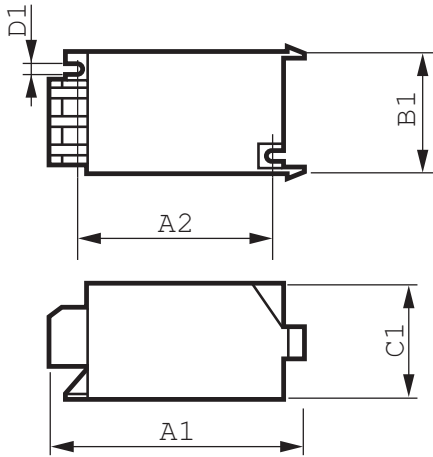
CE marking	Yes
ENEC certificate	Yes

### • Product Data

Order code	913619589966
Full product code	913619589966
Full product name	SN 57 220-240V 50/60Hz
Order product name	SN 57 220-240V 50/60Hz
Pieces per pack	1
Packing configuration	48
Packs per outerbox	48
Bar code on pack - EAN1	8711500915559
Bar code on outerbox - EAN3	8711500907547
Logistic code(s) - 12NC	913619589966
Net weight per piece	0.050 kg

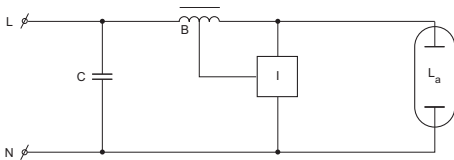
# PHILIPS

## Dimensional drawing



### SN 57 220-240V 50/60Hz

Product	A1 (Norm)	A2 (Norm)	B1 (Norm)	C1 (Norm)	D1 (Norm)
SN 57 220-240V 50/60Hz	84.5	65.0	41.0	38.0	4.3



© 2014 Koninklijke Philips N.V. (Royal Philips)  
All rights reserved.

Specifications are subject to change without notice. Trademarks are the property of Koninklijke Philips N.V. (Royal Philips) or their respective owners.

[www.philips.com/lighting](http://www.philips.com/lighting)

2014, April 11  
data subject to change