



MASTER LEDtube EM/ Mains T8



MASTER LEDtube 1200mm UO 14.7W 840 T8

The Philips MASTER LEDtube integrates a LED light source into a traditional fluorescent form factor. Its unique design creates a perfectly uniform visual appearance which cannot be distinguished from traditional fluorescent. For those that are looking for value for money within limited budget and re-lamping efforts for better light effect and lifetime.

Warnings and Safety

- NOTES: The overall energy efficiency and light distribution of any installation that uses these lamps are determined by the design of the installation.

Product data

General Information	
Cap-Base	G13 ROT (Rotating) [Medium Bi-Pin Fluorescent]
EU RoHS compliant	Yes
Nominal Lifetime (Nom)	70000 h
Switching Cycle	200000X
Flux measurement reference	Sphere

Light Technical	
Color Code	840 [CCT of 4000K]
Beam Angle (Nom)	160 °
Luminous Flux (Nom)	2500 lm
Color Designation	Cool White (CW)
Correlated Color Temperature (Nom)	4000 K
Luminous Efficacy (rated) (Nom)	170.00 lm/W
Color Consistency	<6

Color Rendering Index (Nom)	
Color Rendering Index (Nom)	80
LLMF At End Of Nominal Lifetime (Nom)	70 %

Operating and Electrical	
Input Frequency	50 to 60 Hz
Power (Nom)	14.7 W
Lamp Current (Max)	74 mA
Lamp Current (Min)	61 mA
Starting Time (Nom)	0.5 s
Warm Up Time to 60% Light (Nom)	0.5 s
Power Factor (Nom)	0.9
Voltage (Nom)	220-240 V

Temperature	
T-Ambient (Max)	45 °C
T-Ambient (Min)	-20 °C

MASTER LEDtube EM/Mains T8

T-Storage (Max)	65 °C
T-Storage (Min)	-40 °C
T-Case Maximum (Nom)	55 °C

Controls and Dimming

Dimmable	No
----------	----

Mechanical and Housing

Bulb Finish	Frosted
Bulb Material	Plastic
Product Length	1200 mm
Bulb Shape	Tube, double-ended

Approval and Application

Energy Efficiency Class	C
Energy Saving Product	Yes

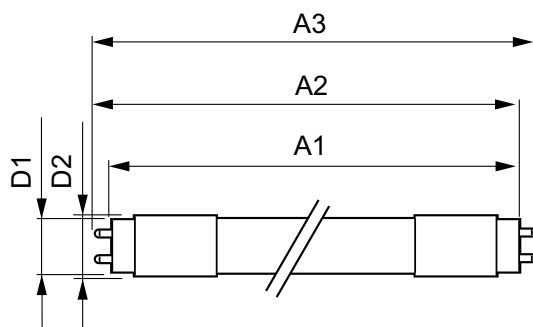
Approval Marks	RoHS compliance TUV CE marking KEMA Keur certificate
----------------	--

Energy Consumption kWh/1000 h	15 kWh
EPREL Registration Number	403671

Product Data

Full product code	871951431658400
Order product name	MASTER LEDtube 1200mm UO 14.7W 840 T8
EAN/UPC - Product	8719514316584
Order code	929002998302
Numerator - Quantity Per Pack	1
Numerator - Packs per outer box	10
Material Nr. (12NC)	929002998302
Net Weight (Piece)	0.270 kg

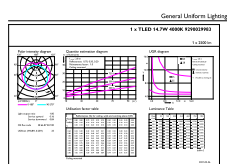
Dimensional drawing



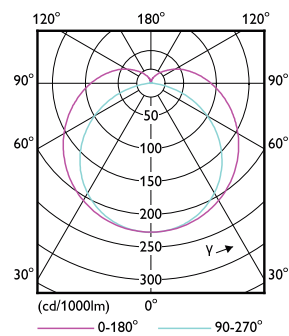
TLED T8 220-240V 14.7-36W 2500lm 4000K

Product	D1	D2	A1	A2	A3
MASTER LEDtube 1200mm UO 14.7W 840 T8	25.8 mm	28 mm	1198.2 mm	1205.3 mm	1212.4 mm

Photometric data



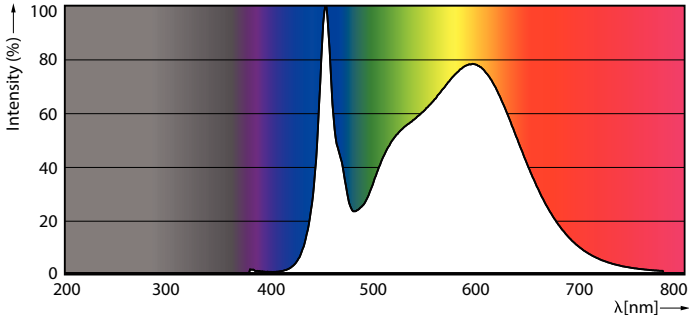
LEDtube MAS 14,7W G13 2500lm 840



LEDtube MAS 14,7W G13 2300lm

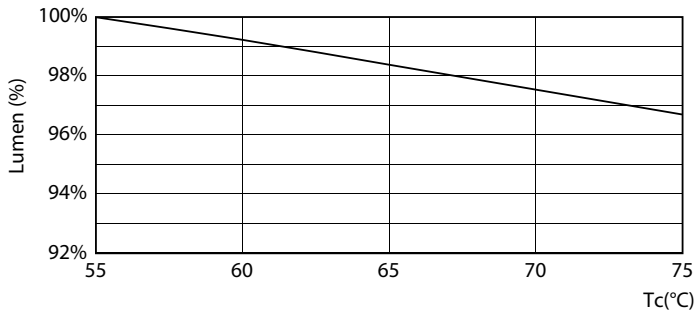
MASTER LEDtube EM/Mains T8

Photometric data

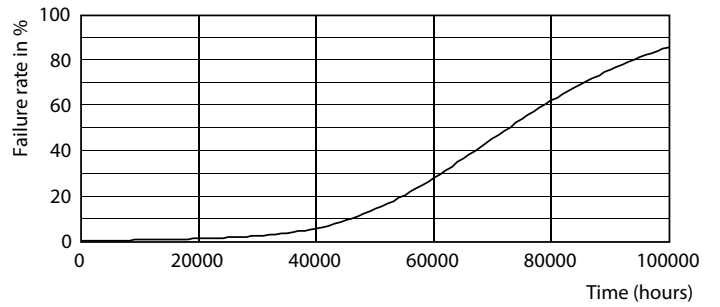


LEDtube MAS 14,7W G13 2500lm 840

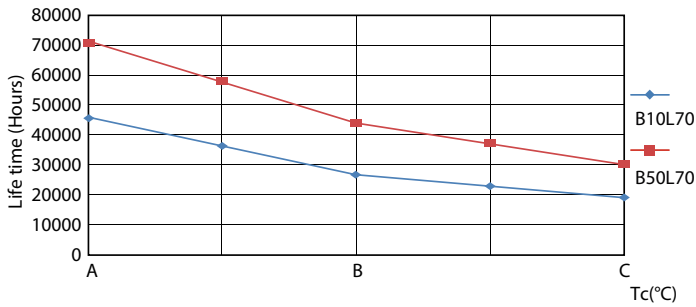
Lifetime



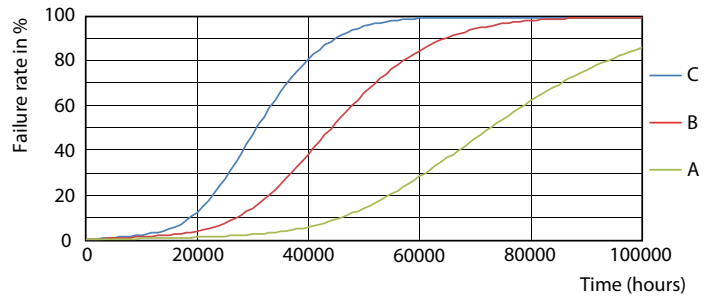
LEDtube MAS 14,7W 70K LumenVsTc



LEDtube_70K-LED



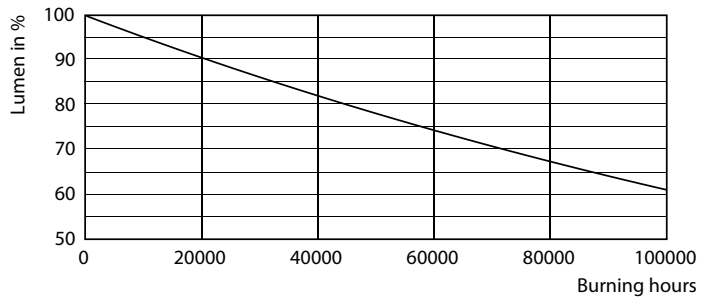
LEDtube_70K_LifetimeVsTc-LED



LEDtube_70K_FailureRate-LED

MASTER LEDtube EM/Mains T8

Lifetime



LEDtube_70K-LMP

